



## 2018 SUMMER HIGHLIGHTS

CoSINe was granted \$211,772 from the Technology Common Fund (TCF) to replace computers for TCF labs scheduled this fiscal year 2019.

The shared High Performance Computing (HPC) cluster received three new compute nodes. This grows the general computing cluster to eight nodes with 272 cores and 1088 GB of RAM!

### CoSINe Help Desk

1003 Cordley

Monday – Friday

8 am – 5 pm

541.737.5574

[helpdesk@science.oregonstate.edu](mailto:helpdesk@science.oregonstate.edu)



# CoSINe Newsletter

2018 / Fall Term

## Welcome to our New Newsletter!

This is our first rebooted (pun intended) edition of the CoSINe Newsletter! Comments are very welcome and may be directed to either Andrew Wheeler, Director of Cosine, or CJ Keist, Assistant Director.

[Andrew.Wheeler@oregonstate.edu](mailto:Andrew.Wheeler@oregonstate.edu)

[CJ.Keist@oregonstate.edu](mailto:CJ.Keist@oregonstate.edu)

## Are you running Windows 7?

The Windows 7 operating system reaches end of support on January 14th, 2020! If you are still running Windows 7 on an OSU owned system, please contact the CoSINe helpdesk to schedule an operating system upgrade to Windows 10 or discuss options on purchasing a new system.

---

*Technology is a word that describes something that doesn't work yet. (Douglas Adams)*

---

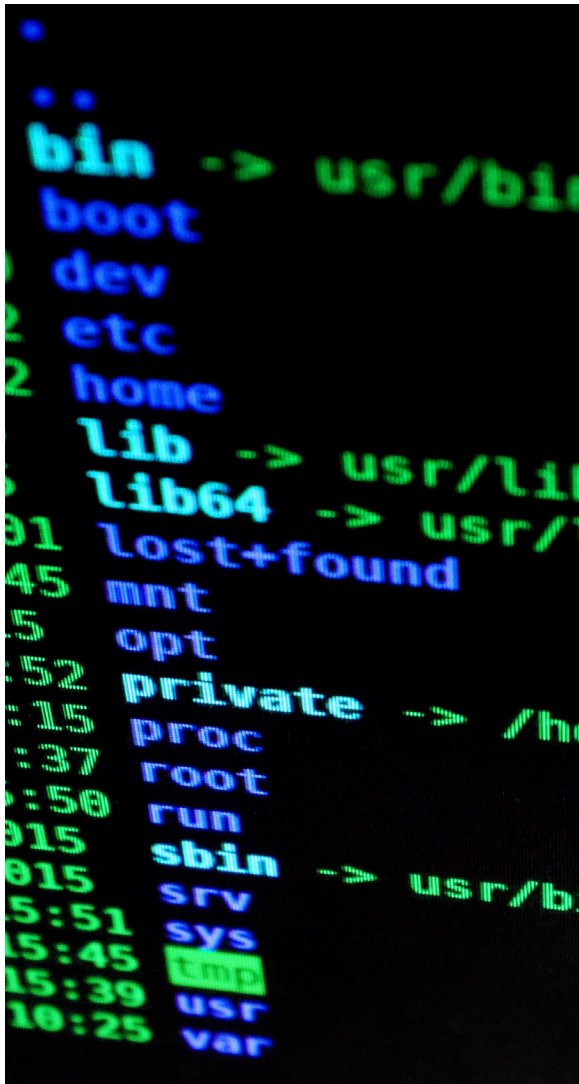
## Do you need more?

CoSINe provides a wide array of network services. The link below provides more information about core services and optional extended services. If you have a special need or request please contact us. We would be happy to discuss options available to you.

<https://cosine.oregonstate.edu/services-and-fees>



**Oregon State**  
University



## Like to take part in the High Performance Computing (HPC) Cluster?

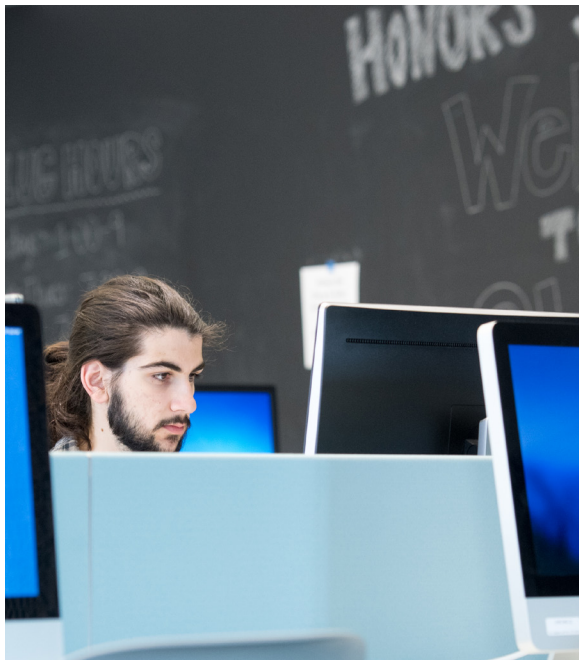
The CoS HPC cluster is free and open to all faculty, researchers and graduate students supported by CoSINE. In addition, the HPC is open to faculty and researchers who wish to buy into the cluster. When you donate one or more compute node(s) to the HPC cluster, CoSINE will waive all co-location fees and system management fees.

We will guarantee 100% compute resources for your node(s) when you need them, plus the computing resources of the entire HPC cluster when the resources are free. Conversely, if your node(s) are idle, they are made available for the general HPC cluster queue.

## Do you have a Backup Plan?

We realize there are those of you running aging systems connected to data acquisition instruments. In most cases, these systems cannot be upgraded either due to the specialized interface cards or the software is only supported on older outdated operating systems. Often times there are no funds available to upgrade these systems.

If you are in this situation, we would like to ask you if you have a backup plan in place to protect your data? If you do not, please feel free to contact our help desk so we can discuss options available to you in protecting your data.



## Shout out to our CoSINE Students!

One of the great privileges working at CoSINE is mentoring our young student employees. Our success in CoSINE is in large part due to their hard work and dedication to our CoSINE user community!

So, it is always a sad day for us when our students graduate, but equally excited for their new prospects and adventures ahead.

### Recent students that have graduated:

#### Ryan Smith:

Joined CoSINE in Spring 2014 and graduated Spring term 2018. Ryan got his degree in Mechanical Engineering. Ryan is currently at PSU pursuing a graduate degree in Materials Science.



**Oregon State University**  
College of Science